

# Ci130.2QS/QR

Information Sheet



Intended to be as unobtrusive as possible, the Ci Series Ci130.2QS and Ci130.2QR are high-fidelity flush-mount loudspeakers utilising KEF's Uni-Q® driver array technology. This gives the round and square bezel speakers the inherent smooth dispersion characteristics to fill any normal room with an expansive, generous and rich sound stage.

Equally at home - the square speaker in the wall or round speaker in the ceiling - the driver array is mounted into a moulded ABS baffle and can be easily and quickly installed with the moisture-resistant bracket and fixings allowing placement in the harshest environments, such as bathrooms or even outside (under eaves).

#### Features and Benefits:

The Ci130.2QS and Ci130.2QR combine 50W power handling and 86dB sensitivity. A 130mm (5¼") bass/mid driver giving good bass extension along with a 19mm (¾") aluminium dome tweeter provide excellent power handling and smooth response.

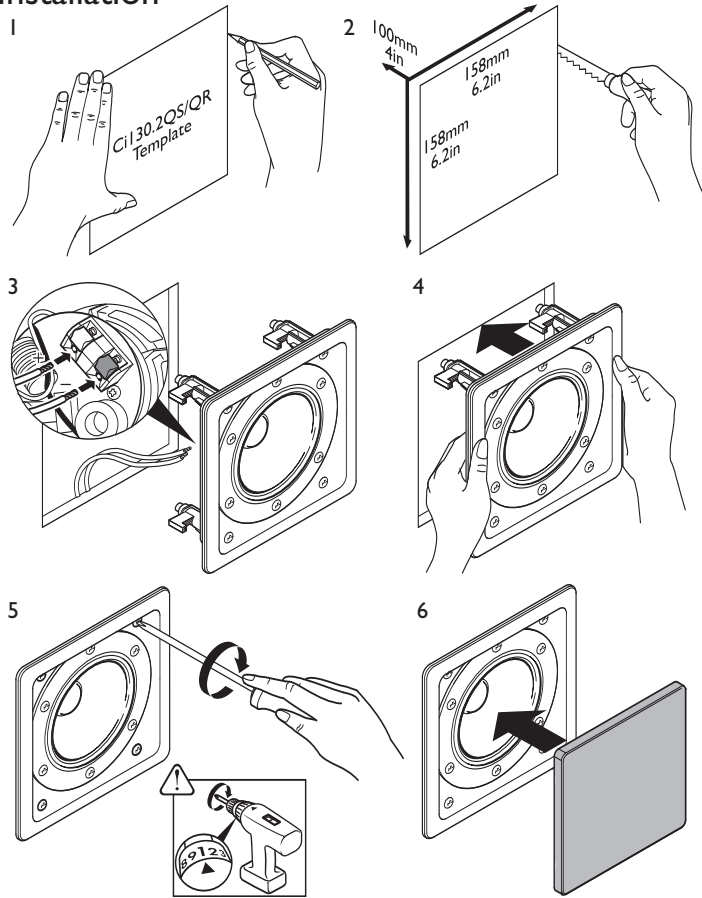
The bezel and grille can be painted or covered by fabric to match the interior décor.

**Ci series**  
custom installation speakers



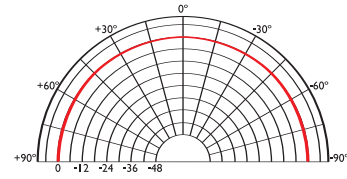
# Ci130.2QS/QR

## Installation

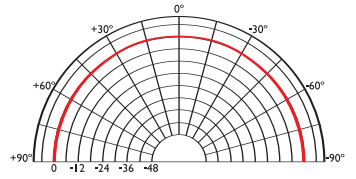


## Polar graphs

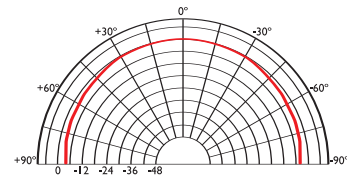
500Hz



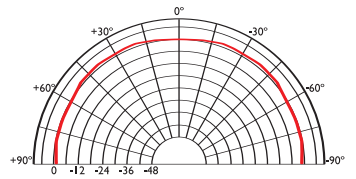
1kHz



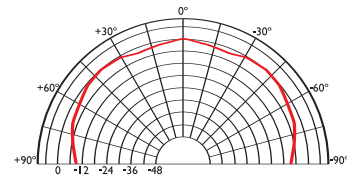
2kHz



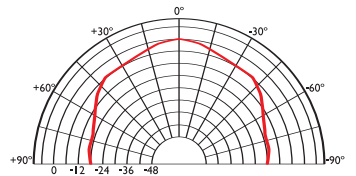
4kHz



8kHz



16kHz



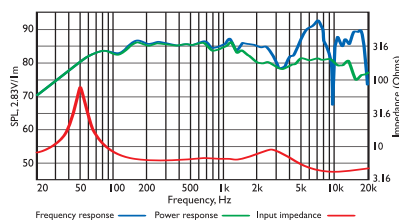
## Architectural specifications:

The Ci Series Ci130.2QS and Ci130.2QR comprise a Uni-Q® coincident mounted 19mm aluminium dome tweeter with a 130mm white polypropylene bass/mid unit. Performance should meet or exceed the following criteria: frequency response 1 metre on-axis with swept sine wave shall

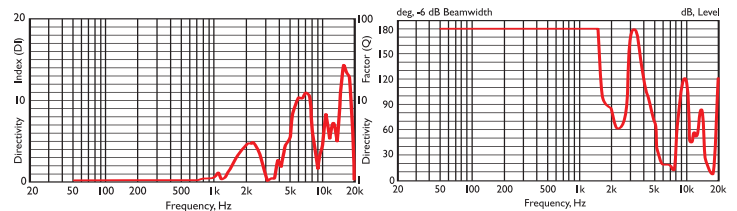
be 50Hz to 40kHz QS, 100Hz to 40kHz QR, sensitivity shall be at least 86dB for 2.83V@1m. The impedance and maximum power shall be 50W at 8 ohms. The Ci Series Ci130.2QS and Ci130.2QR is best suited where high quality music and speech reinforcement applications require hi-fi performance such as:

- Multi Room systems.
- Home Theatre systems.
- Lounges, Bars, Boutiques.
- Boardrooms & Offices.
- Airports, Convention Centres, Hotels.

## Frequency / Power response, Input impedance



## Directivity Index / Beamwidth



## Specifications

Frequency range $\pm$ 3dB	QS: 50Hz - 40kHz, QR: 100Hz - 40kHz
Sensitivity (2.83v @ 1m)	86dB
Rec. amplifier power	10 - 50W
Nominal Impedance	8 $\Omega$ (min. 3.2 $\Omega$ )
Crossover Frequency	2.8kHz

Enclosure material	Steel with QR
Terminals	spring terminals up to $\varnothing$ 2.5mm (0.1")*
Dimensions (H x W x D)	180 x 180 x 105 mm, 7.1 x 7.1 x 4.1 in QS $\varnothing$ 180 x 105 mm, 7.1 x 4.1 in QR**
Net weight	1.3kg (2.9lbs) QS, 1.7kg (3.7lbs) QR

\* Block terminals up to  $\varnothing$ 2.5mm with Ci130.2QR enclosure.

\*\* Depth 154mm (6in) with Ci130.2QR enclosure.